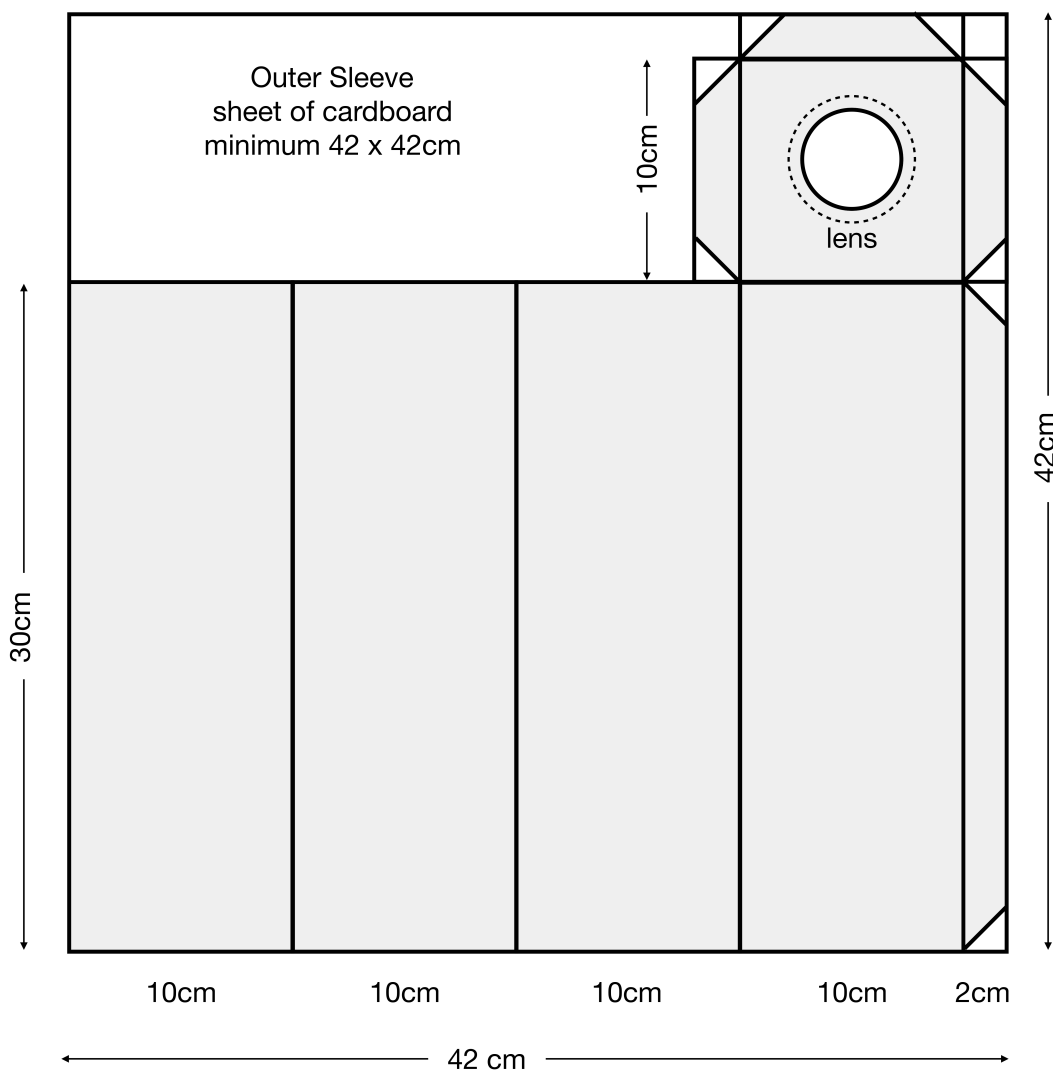
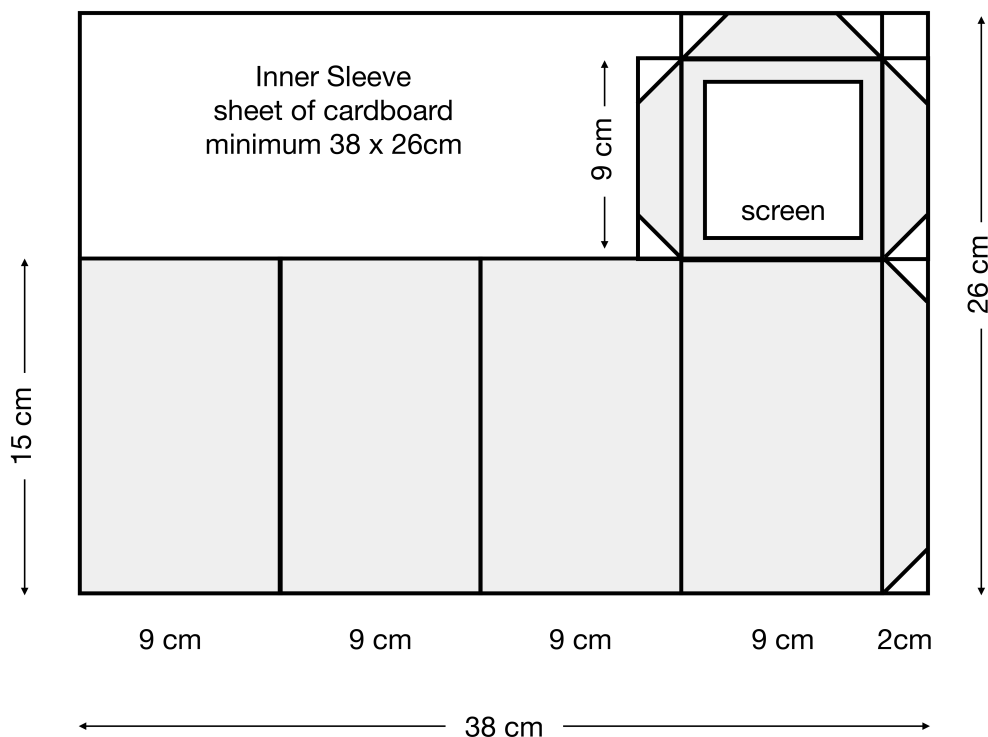


The Cardboard Camera Obscura



1. Find two sheets of card, one 42x42cm and the other 38x26cm.
2. Get a cheap plastic magnifying glass with 4x magnification.
3. Mark up the card as shown in the diagrams. Double check your measurements.
4. Cut out the card leaving the shaded areas.
5. Cut the round hole slightly smaller than your lens so it can be glued on.
6. Fold up the longer, outer sleeve with the long tab on the outside.
7. Fold up the shorter, inner sleeve with the long tab on the inside.
8. Tape or glue all the tabs in place.
9. Fix the lens to the hole using strong glue or tape.
10. Cut out a 9x9cm square of tracing paper and affix it to the inner sleeve.
11. Slide the sleeves together until the image is in focus.

